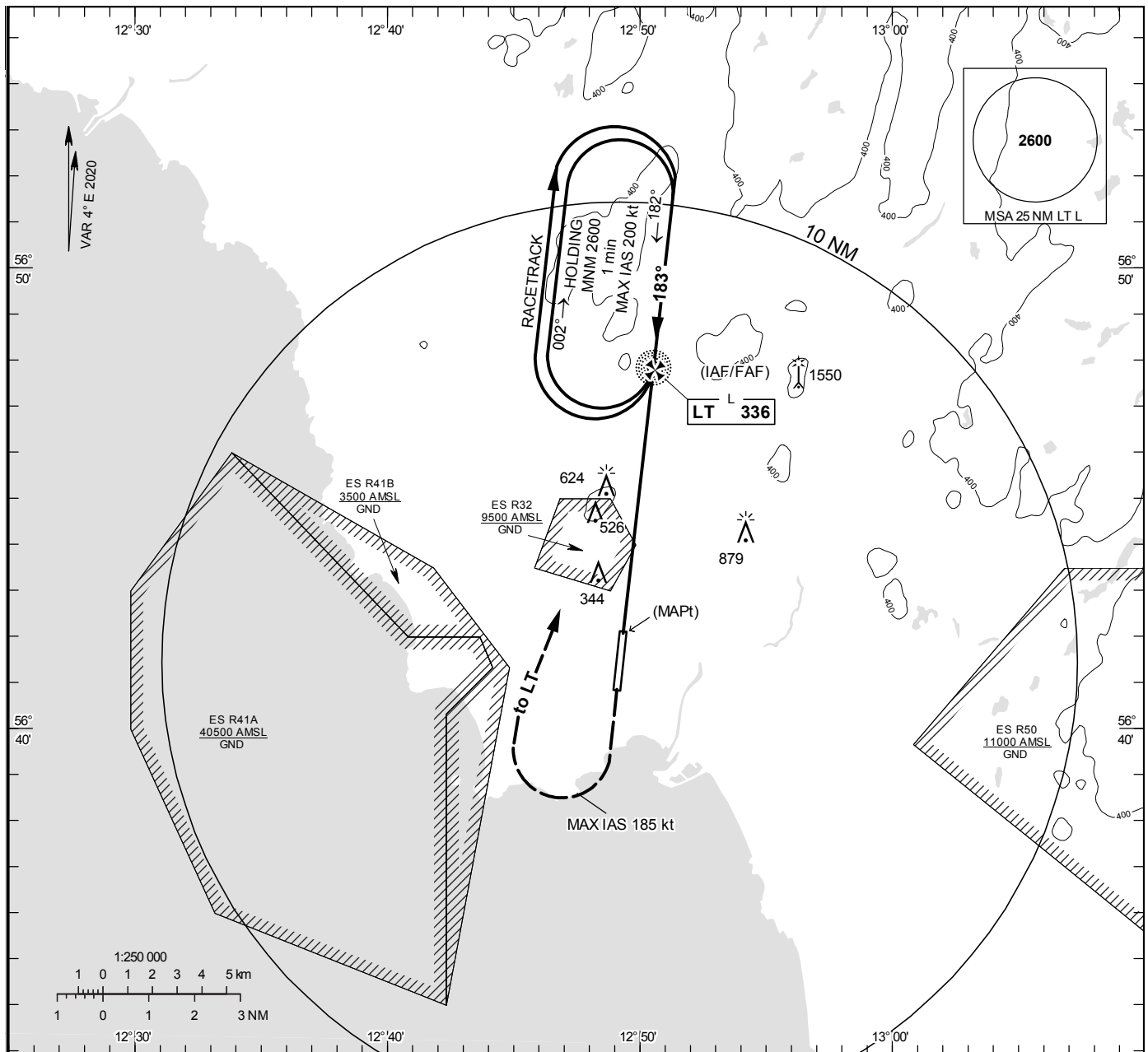


HALMSTAD
NDB RWY 19**INSTRUMENT
APPROACH
CHART – ICAO****THR ELEV 84.2 ft, AD ELEV 101 ft**OCH are related to THR.
Circling OCH are related to AD ELEV.
BRG are MAG
ALT. HGT and ELEV in ft.

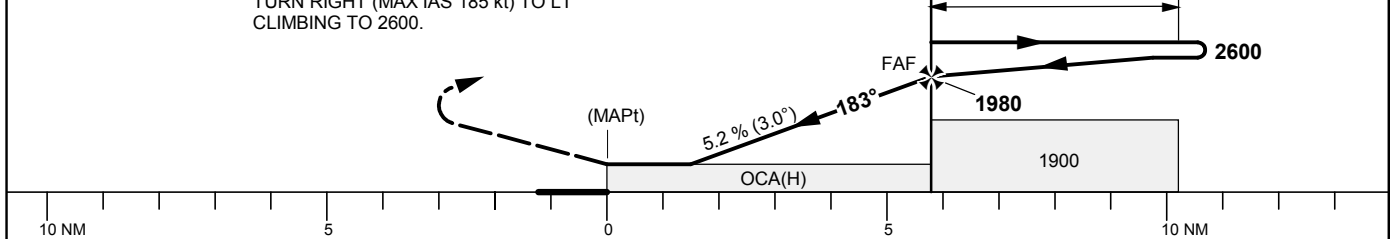
HALMSTAD TOWER	130.105
	135.055

**TA 5000 ft AMSL**

Final APCH line 1° offset

CLIMB STRAIGHT AHEAD TO 1500,
TURN RIGHT (MAX IAS 185 kt) TO LT
CLIMBING TO 2600.

(IAF/FAF)	Cat A: 2.0 min
LT	Cat B: 1.5 min
	Cat C/D: 1.0 min



OCA (H)					Final approach		Distance FAF-MAPt 5.8 NM				
Cat of ACFT	A	B	C	D	DME MT NM	3	4	5			
Straight-in Approach	880 (800)				ALT	1040	1360	1680			
					GS	kt	80	100	120	140	160
Circling	880 (780)	880 (780)	1280 (1180)	1280 (1180)	Time	min:s	4:21	3:29	2:54	2:29	2:10
Circling Cat D Max IAS 195 kt					Rate of descent	ft/min	425	530	635	745	850
										955	

CHANGE: Editorial